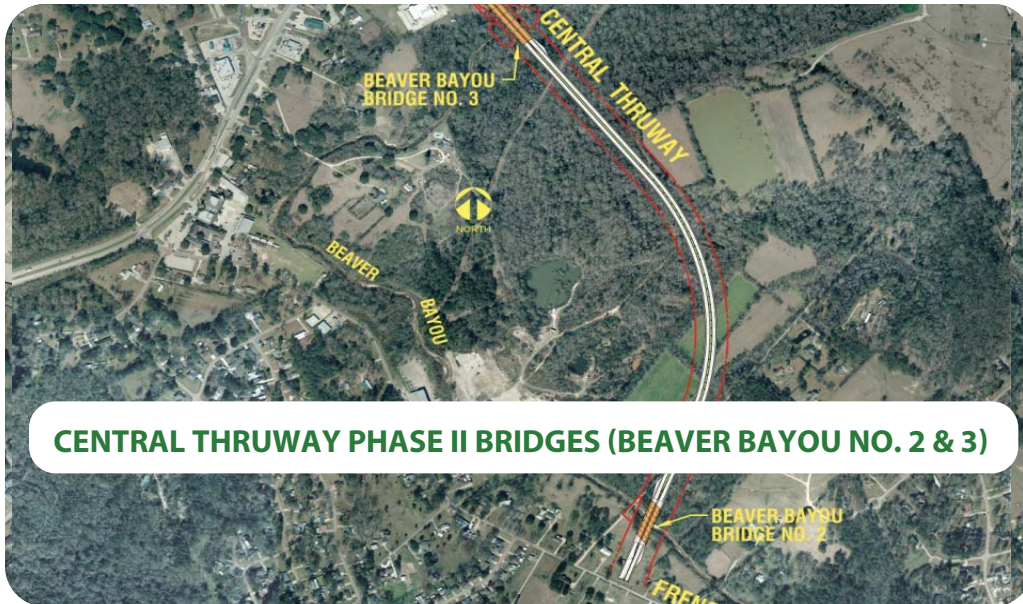


MAY 6th

Green Light Plan

Building Better Roads for East Baton Rouge Parish



CENTRAL THRUWAY PHASE II BRIDGES (BEAVER BAYOU NO. 2 & 3)

IMPROVEMENTS

- The Central Thruway project consist of a 4 lane divided highway and 7 bridges including a railroad overpass and crossing of the Comite River.
- Phase II of the Central Thruway includes:
 - Beaver Bayou No. 2 & 3 Bridge Construction
 - Clearing & Grubbing; Embankment Work
 - Greenwell Springs Intersection Improvements
 - Roadway Construction from Frenchtown Road to Sullivan Road
- The Beaver Bayou No. 2 & 3 Bridges project will complete the bridges required for the Central Thruway and includes 655 feet of new bridge construction.

BENEFIT TO CITIZENS

- When combined with Central Thruway Phase I and other projects in the Green Light Plan, it will provide an improved north-south connection for the area as well as an improved north-south connection extending from Nicholson Drive to Hooper Road.
- The Central Thruway Project also provides a vital flood evacuation route out of both the Central area and the Stevendale Subdivision region, which currently gets land locked during periods of major flooding.
- The project becomes the twenty-fourth Green Light Plan project to reach construction, contributing to the overall traffic mitigation efforts for the City-Parish.

CENTRAL THRUWAY PHASE II BRIDGES BEAVER BAYOU NO. 2 & 3

With a construction cost of \$7.8 M and an anticipated completion date of August 2011, the project was awarded through the public bid process to Gilchrist Construction Co., LLC. Once the remaining segments of the Central Thruway Phase II project are complete, a new four-lane roadway with a raised median and shoulders on new alignment will extend from Frenchtown Road to Sullivan Road.

CONSTRUCTION DETAILS

DESIGN ENGINEER

Shread-Kuyrkendall & Associates

CONTRACTOR

Gilchrist Construction Co, LLC

CONSTRUCTION COST

\$7,769,728.63

Construction funded by the American Reinvestment and Recovery Act (ARRA) through the Louisiana Department of Transportation and Development (LA DOTD)

CONSTRUCTION BEGAN

April 1, 2010

