



THE GREEN LIGHT PLAN



PERKINS AT STANFORD/ACADIAN INTERSECTION IMPROVEMENTS PROJECT
RIBBON CUTTING CEREMONY AUGUST 26, 2010



MESSAGE FROM MAYOR KIP HOLDEN
Mayor Holden at the recent ribbon cutting ceremony for the (12) twelfth Green Light Plan Project to reach completion.

"The completion of the Perkins at Stanford and Acadian Intersection Improvements project means the opening up of one of the most widely-used intersections in Baton Rouge, and a vital gateway to the LSU area," said Mayor-President Kip Holden. "We are already seeing a dramatic difference in how smoothly traffic is flowing through this area that was very congested. This is a significant improvement for commuters as well as the neighborhoods and businesses near this intersection.

QUARTER HIGHLIGHTS AND EXECUTIVE SUMMARY

This Quarterly Report (3rd Quarter 2010) covers the period from July 1, 2010 through September 30, 2010, and provides an overview of the Green Light Plan, a City of Baton Rouge, Parish of East Baton Rouge Road and Streets Improvements Program.

This report contains a number of Program successes, including:

PROJECT COMPLETION:

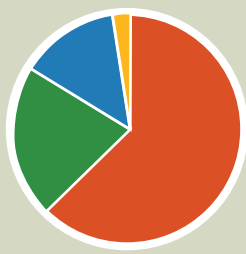
- Veterans Memorial Boulevard - Burbank Drive - Segment 2
- Burbank Drive - Segment 1
- Picardy Avenue Extension
- S. Choctaw at N. Flannery
- Perkins at Stanford/Acadian
- Central Thruway 1 (Comite & Beaver Bayou Bridges)
- Burbank Drive - Segment 2
- Coursey at Sherwood Intersection
- Pecue Re-Alignment at Perkins
- Downtown Signalization
- North Harrell's Ferry Road
- Foster at Government
- Lobdell Improvements

CONSTRUCTION UNDERWAY:

- Central Thruway Projects:
- Sullivan Channel & ICCN Railroad 70% Complete
 - Phase II Clearing and Embankment 20% Complete
 - Beaver Bayou No. 2 & 3 20% Complete
- Central Thruway Phase I Paving: 30% Complete
- Highland Road: 70% Complete
- Jones Creek Road - Seg. 3: 70% Complete
- Brightside Lane: 80% Complete
- Staring Lane Extension: 70% Complete
- Siegen Lane: 50% Complete
- South Harrell's Ferry - Seg. 2: 40% Complete
- O'Neal Lane - SHFR to I-12: 30% Complete
- O'Neal Lane Bridge Embankment: 60% Complete
- Knox Branch and Jones Creek 60% Complete
 - South Harrell's Ferry - Seg. 1: 20% Complete
 - Comite Drive: 30% Complete
 - Ford Street: 20% Complete
 - Elm Grove Garden: 70% Complete

PROGRAM SAVINGS TO DATE
The Green Light Plan has experienced a favorable bidding environment providing a cumulative savings on estimated construction costs of \$33,770,020.96.

TOTAL COMMITTED FUNDS THRU END OF 3RD QTR 2010: \$431.7M



- Construction - \$301.1M
- Right of Way - \$74.3M
- Engineering - \$39.0M
- Utility Relocations - \$17.3M

PERKINS AT STANFORD/ACADIAN IMPROVEMENTS

PROJECT DETAILS

The Perkins at Stanford/Acadian Improvements Project added six additional turning lanes to the existing intersection. The project added a right-turn and left-turn lane to both southbound Acadian Thruway and westbound Perkins Road. Northbound Stanford Avenue received a new right-turn lane and eastbound Perkins Road received an additional left-turn lane. The project also has new traffic signalization with LED lighting and video detection, adding to the efficiency of the improved intersection.

CONSTRUCTION DETAILS

- Design Engineer**
ABMB Engineers, Inc.
- Contractor**
RCS Contractors, Inc.
- Construction Cost:** \$2.51M
- Project Length:** Intersection
- Construction Began:** April 5, 2010
- Construction Completed:** August 6, 2010

LOCAL INVOLVEMENT

The engagement of the local business community with the Green Light Plan was and still is an important goal of Mayor Kip Holden's Administration. At the current time, eighty-nine (89) firms are providing services to the Green Light Plan.

PROGRAM MANAGEMENT

CSRS, Inc.
PBS&J
GOTECH Neel-Schaffer
Compliance Consultants
Jones-Walker
John C. Doiron, MAI
Rampart Resources
SSA Consultants

DESIGN CONSULTANTS

ABMB Engineers, Inc.
AECOM
AFJM
Buchart Horn, Inc.
Burk-Klienpeter, Inc.
Civil Design & Construction
Evans-Graves Engineers
Ferris Engineering
Forte & Tablada, Inc.
GEC, Inc.
HNTB Corporation
Justice & Huang Engineers
Marrero & Couvillon Assoc.
PEC Corporation
Providence Engineering
Pyburn & Odom, Inc.
Shaw Environmental
Shread-Kuyrkendall
SIGMA Consulting Group
SJB Group, Inc.
TRC Engineers, Inc.
URS Corporation

CONSTRUCTION FIRMS

Ernest P. Breaux Electrical
Industrial Enterprises, Inc.
Barber Brothers Contracting
J. B. James Construction
Hardrock Construction, LLC
L & A Contracting Company
Stranco, Inc.
James Construction Group
Byron E. Talbot Contractor
Boone Services, Inc.
F.G. Sullivan, Jr. Contractor
RCS Contractors, Inc.
Gilchrist Construction Co.
Richard Price Contracting

CONSTRUCTION LETTING SCHEDULE AND RESULTS

PROJECT	LET DATE	DESIGN CONSULTANT	LOW BIDDER	LOW BID \$
Staring Lane	09/09/10	ABMB Engineers, Inc.	J B James Construction	\$26,964,828.40

ADDITIONAL BIDDERS:

James Construction Group, LLC
Barber Brothers Contracting

Gilchrist Construction Group, LLC
Byron E. Talbot, Inc.

CUMULATIVE SAVINGS TO DATE: \$33,770,020.96
(Engineer Estimate vs. Low Bid)

UPCOMING PROJECT LETTING SCHEDULE

October 27, 2010

S. Harrell's Ferry at Sherwood Forest Phase II Intersection Improvements

January 26, 2011

Central Thruway at Greenwell Springs Road Intersection Improvements

February 8, 2011

Stumberg Extension Phase I

Note: Project Letting Dates are subject to change.

3RD QUARTER GREEN LIGHT PLAN EVENTS

August 25, 2010

Central Thruway Phase I Paving Groundbreaking Ceremony

August 26, 2010

Perkins at Stanford/Acadian Intersection Ribbon Cutting Ceremony

September 2, 2010

S. Choctaw at N. Flannery Intersection Ribbon Cutting Ceremony

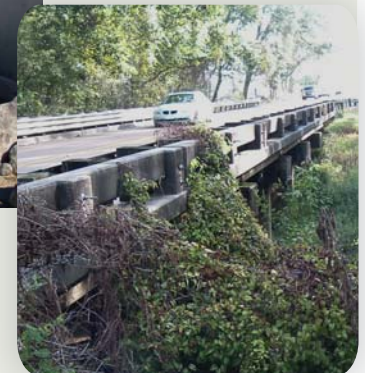
PROJECT HIGHLIGHT: HIGHLAND ROAD IMPROVEMENTS



GROUNDBREAKING
JANUARY 26, 2009

CONTRACTOR
JB JAMES CONSTRUCTION

CONSTRUCTION COST
14.9 M



The Highland Road Improvements project replaces a two-lane undivided roadway with a four-lane roadway with a raised median. It provides a new railway crossing at the Kansas City Southern Railroad and new bridge crossings at Ward's Creek and Old Ward's Creek. Of the Green Light Program's twenty-six bridge projects, these are the first to reach completion and be opened for traffic.

RIGHT-OF-WAY ACQUISITION

The Right-of-Way Committee oversees the management of the acquisition process for the Green Light Plan. It meets monthly to set right-of-way policies, review acquisition issues, recommend project assignments, and make committee related decisions.

EARLY RIGHT-OF-WAY ACQUISITIONS

When the Right-of-Way Committee determines that early acquisitions will benefit both the project and the community, the Right-of-Way Acquisition team manages the process. In the first half of 2010, nine (9) early acquisitions were completed on the Staring Lane Project.

NORMAL RIGHT-OF-WAY ACQUISITIONS

By the end of 2009, land acquisition for nineteen (19) projects had been completed. In first half of 2010, land acquisition on two (2) projects was completed bringing the total number of projects involving land acquisition to twenty one (21) projects. It is expected that eight (8) more land acquisition projects will be completed by the end of the year, bringing a total of twenty seven (27) projects involving acquisition of more than 750 parcels under the Green Light Plan Program.

RIGHT-OF-WAY ACQUISITIONS COMPLETE:

Burbank Drive - Seg 1	Burbank Drive - Seg 2	N. Harrell's Ferry Road	Coursey at Sherwood
Foster at Government	Lobdell Improvements	Picardy Avenue	Staring Lane Extension
Highland Road	Jones Creek Road - Seg 3	Siegen Lane	Brightside Lane
O'Neal Lane - Seg 1	McHugh Road	S. Harrell's Ferry - Seg 2	S. Choctaw at N. Flannery
S. Harrell's Ferry - Seg 1	Elm Grove Garden	Hwy 61 at LA 64	Ford Street
Perkins at Stanford/Acadian		Pecue Re-alignment at Perkins	

RIGHT-OF-WAY ACQUISITION UNDERWAY:

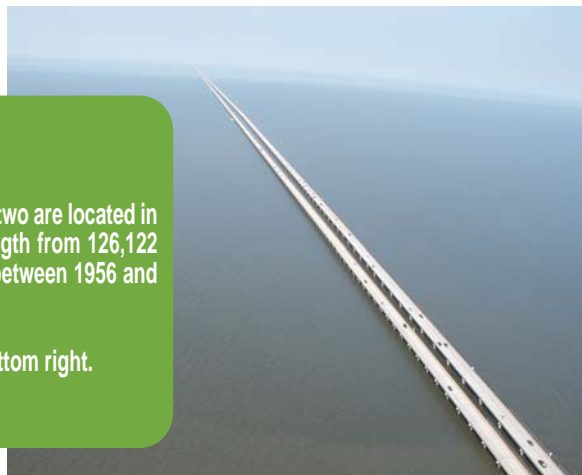
The following summary presents the active projects currently in the right-of-way acquisition process:

PROJECT	ESTIMATED ACQUISITIONS	COMPLETED ACQUISITIONS	4TH QUARTER PROJECTED
Sullivan Road	67	46	21
Staring Lane	124	57	67
Fairchild - Badley	17	0	17
Essen Lane at I-10	3	0	3
Stumberg Extension Phase I	3	0	3

DID YOU KNOW?

Of the top 5 longest bridges in the world, two are located in the State of Louisiana. They range in length from 126,122 feet to 120,440 feet, and they were built between 1956 and 1970. Can you name them?

Answers are located on the last page; bottom right.



LOCAL INVOLVEMENT CONTINUED

RIGHT OF WAY FIRMS

Abstracts
 Lauck Land Co.
 Gulf South Land and Title
 Roberts Land Services
 Godail Abstracting Services
 James Gist (sole proprietor)

Appraisals
 Vallery Lowery
 George Platt, Inc
 Ross Shuffield
 The Lakvold Group LLC
 James Inc.
 James G. Lipscomb, ASA
 Custom Solutions Group
 Bill Kipf, SRA
 Gary P. Alvarez
 Jack E. Evans, Jr.
 Roberto J. Aguilar
 Leonard Smith
 Thompson Wallace
 James Lieux
 Kermit Williams
 ROW Acquisitions

Acquisition Services
 Rampart Resources
 PEC Corporation
 Quest Acquisitions
 Stone Property Services
 ABMB Engineers
 Dan Collins & Associates
 LaPac
 Volkert & Associates
 Lauck Land Company

Relocation Estimates
 America's Best Sign
 Gullede Fence Company

SUPPORT SERVICES FIRMS

Wetlands Determination
 Providence Engineering
 C-K Engineering

Environmental Assessment
 CRA
 GSRC

Geotechnical Investigations
 Louis Capozzoli & Assoc.
 Ardaman & Associates

Noise Mitigation
 URS Corporation

Survey Support
 Baton Rouge Land Surveying

Traffic Engineering
 HNTB Corporation
 Urban Systems, Inc.

Utility Relocation
 Pete's Plumbing

PROJECT STATUS

The Program Management Team is responsible for thirty-six (36) Green Light Projects and eight (8) 2002 1/2-Cent Sales Tax Projects. At the present time, thirty-seven (37) projects are in an "active" status ranging from corridor survey/design study thru construction. The current project status is provided below in tabular form.

COMPLETED PROJECTS

PROJECT	DESIGN STUDY	FINAL PLANS	RIGHT-OF-WAY	UTILITY RELOCATIONS	CONSTRUCTION
Veterans Memorial Boulevard					
Burbank Drive - Segment 2					
Burbank Drive - Segment 1					
North Harrell's Ferry Road					
Coursey at Sherwood Intersection					
Foster at Government Intersection					
Picardy Avenue Extension					
Downtown Signalization					
Lobdell Improvements					
Pecue Re-Alignment at Perkins					
Central Thwry I Comite/Beaver Bayou Bridges					
Perkins at Stanford/Acadian					
S. Choctaw at N. Flannery Intersection					

UNDER CONSTRUCTION

PROJECT	DESIGN STUDY	FINAL PLANS	RIGHT-OF-WAY	UTILITY RELOCATIONS	CONSTRUCTION
Highland Road					
Jones Creek - Segment 3					
Brightside Lane					
Central Thwry Sullivan & ICCN Railroad Bridges					
Staring Lane Extension					
Siegen Lane					
South Harrell's Ferry - Seg. 2					
O'Neal Lane - Segment 1					
South Harrell's Ferry - Seg. 1					
Central Thruway II Clear & Grub; Embankment					
Comite Drive					
Ford Street					
Elm Grove Garden					
Central Thwry II Beaver Bayou 1 & 2 Bridges					
Central Thwry I Paving-Florida/Sullivan Bridge					

BID & CONTRACTING

PROJECT	DESIGN STUDY	FINAL PLANS	RIGHT-OF-WAY	UTILITY RELOCATIONS	CONSTRUCTION
S. Harrell's Ferry at Sherwood Forest Intersection					
Staring Lane					

BIDDING NEXT QUARTER

PROJECT	DESIGN STUDY	FINAL PLANS	RIGHT-OF-WAY	UTILITY RELOCATIONS	CONSTRUCTION
Central Thruway II Greenwell Springs Intersection					

PLANNING, DESIGN AND ROW ACQUISITION

PROJECT	DESIGN STUDY	FINAL PLANS	RIGHT-OF-WAY	UTILITY RELOCATIONS	CONSTRUCTION
Stumberg Extension					
US 61 - LA Hwy 64 Intersection					
O'Neal Lane					
Nicholson at Brightside/W Lee Intersection					
Essen Lane at I-10 Intersection					
Sullivan Road					
Central Thruway II Paving					
McHugh Road					
Old Hammond Hwy - Segment 2					
Old Hammond Hwy - Segment 1					
Fairchild-Badley Road					
Hooper at Sullivan Intersection					
Hooper Road					
Nicholson Drive - Segment 1					

1973
1970
1956
96,100 ft
120,440 ft
126,122 ft
Atchafalaya Basin Bridge
Manchac Swamp Bridge
Lake Pontchartrain Causeway