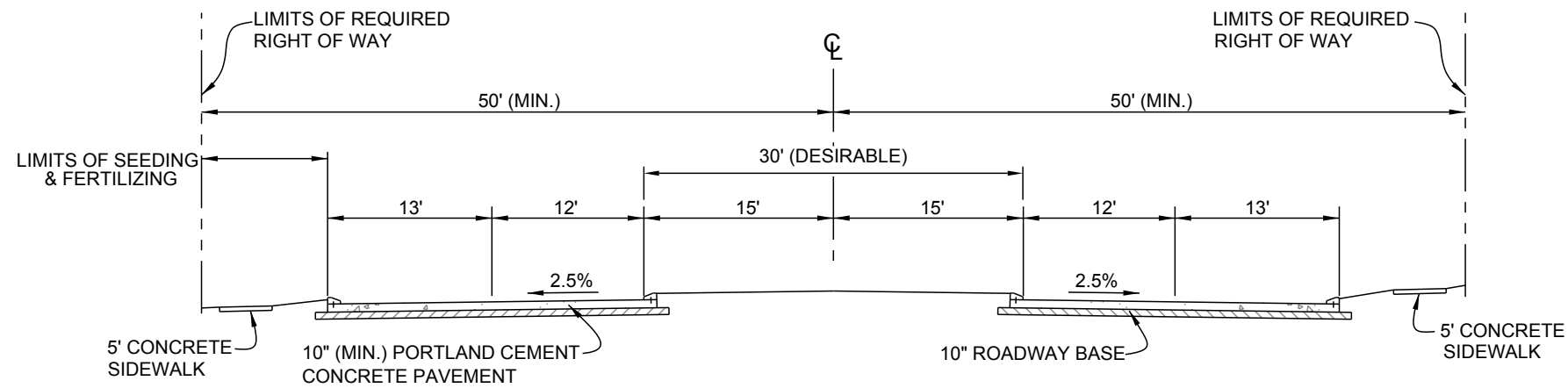


EXISTING TYPICAL SECTION



PROPOSED TYPICAL SECTION



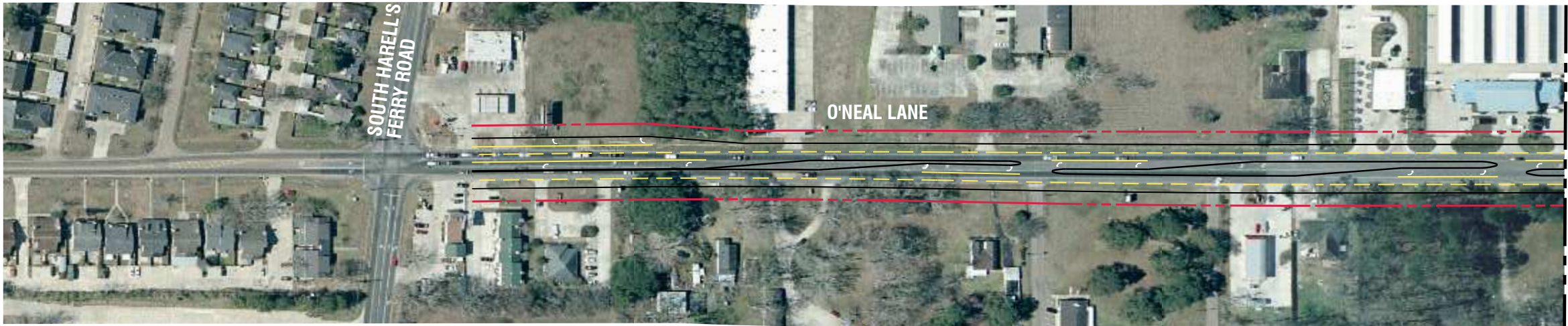
In association with:  
 PBS&J  
 GOTECH, Inc.  
 Neel-Schaffer, Inc.  
 Compliance Consultants, Inc.  
 Jones Walker, LLP  
 John C. Doiron  
 MAI Appraisal Services  
 Rampart Resources  
 SSA Consultants, LLC

Project:  
**O'Neal Lane (Segment 1)**  
**(S. Harrell's Ferry Road to**  
**1250' South of I-12)**

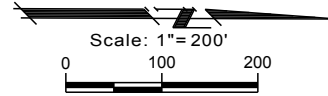
Sheet Title:  
**Exhibit A**

Date: October 8, 2007  
 Project Number: 25041.00  
 Drawn By: BD  
 Checked By: MM

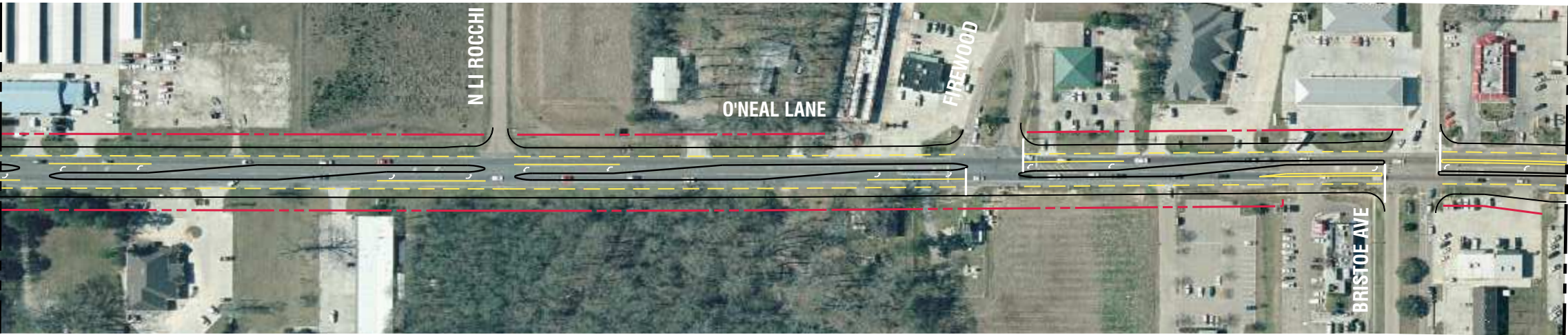
**B-102**



Matchline A

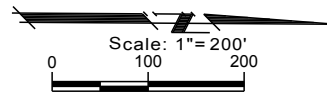


**1** O'Neal Lane (Seg 1) (South Harrell's Ferry Road to 1250' South of I-12)  
Scale: 1" = 200'

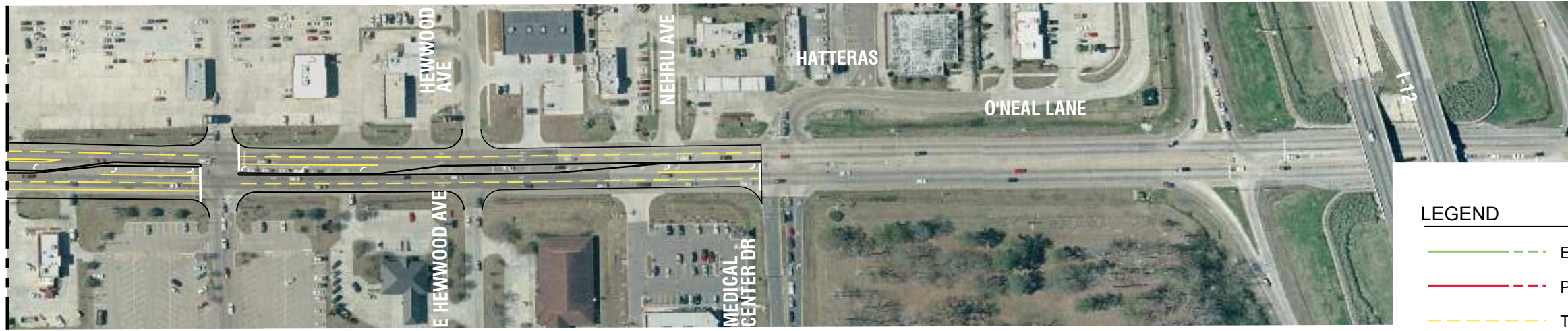


Matchline A

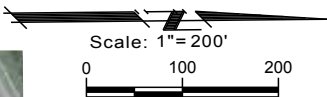
Matchline B



**2** O'Neal Lane (Seg 1) (South Harrell's Ferry Road to 1250' South of I-12)  
Scale: 1" = 200'



Matchline B



**3** O'Neal Lane (Seg 1) (South Harrell's Ferry Road to 1250' South of I-12)  
Scale: 1" = 200'

**LEGEND**

- EXISTING APPARENT R.O.W.
- PROPOSED R.O.W.
- TRAVEL LANES
- EDGE OF ROAD



In association with:  
 PBS&J  
 GOTECH, Inc.  
 Neel-Schaffer, Inc.  
 Compliance Consultants, Inc.  
 Jones Walker, LLP  
 John C. Doiron  
 MAI Appraisal Services  
 Rampart Resources  
 SSA Consultants, LLC

Project:  
**O'Neal Lane (Seg 1)**  
**(S. Harrell's Ferry Road to**  
**1250' South of I-12)**

**Exhibit B**

Date: October 8, 2007  
 Project Number: 25041.00  
 Drawn By: GB  
 Checked By: BD  
 Sheet:

I:\Gis\proj\1250411\Projects\102 - O'Neal Lane (Seg 1)\Roadway Design\102 - Concept Plan\Drawings\070919 102 Concept Plan.dwg Oct 09, 2007 - 3:47pm