



In association with:
 PBS&J
 GOTECH, Inc.
 Neel-Schaffer, Inc.
 Compliance Consultants, Inc.
 Jones Walker, LLP
 John C. Doiron
 MAI Appraisal Services
 Rampart Resources
 SSA Consultants, LLC

Project:
**O'Neal Lane
 (South Harrell's Ferry Road
 to George O'Neal Road)**

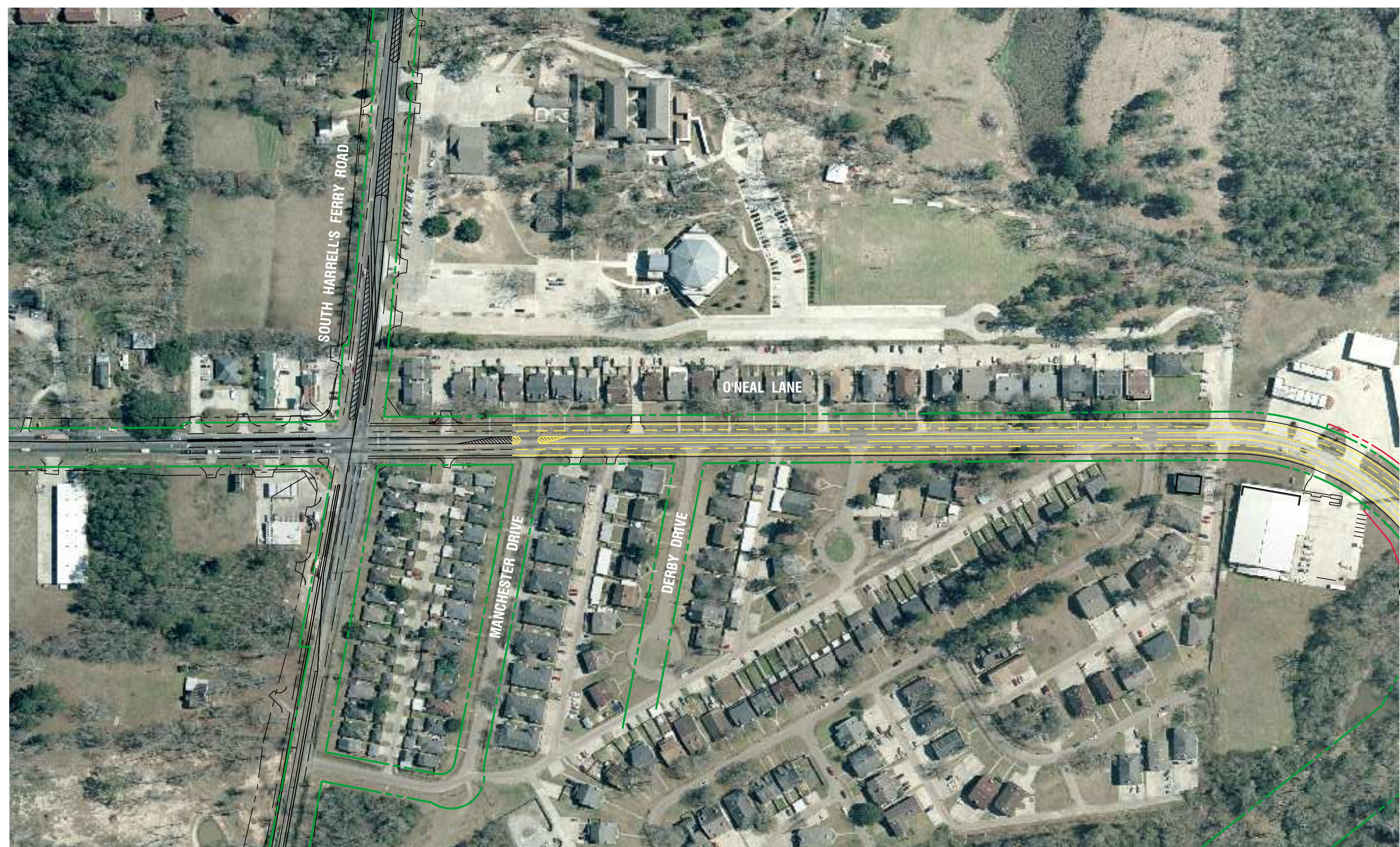
Sheet Title:
Exhibit B

Date: July 20, 2010
 Project Number: 25041.00
 Drawn By: MMG
 Checked By: BP
 Sheet:

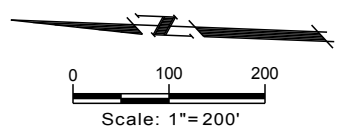
203

1 of 3

Sheet No:



1 O'Neal Lane (South Harrell's Ferry Road to George O'Neal Road)
 Scale: 1" = 200'



LEGEND

	EXISTING APPARENT R.O.W.
	PROPOSED R.O.W.
	TRAVEL LANES
	EDGE OF ROAD

\\Glipperkins\siglp\Projects\203 - O'Neal Lane\Roadway Design\Concept Plan_203 Concept_1.dwg Jul 20, 2010 - 2:25pm



In association with:
 PBS&J
 GOTECH, Inc.
 Neel-Schaffer, Inc.
 Compliance Consultants, Inc.
 Jones Walker, LLP
 John C. Doiron
 MAI Appraisal Services
 Rampart Resources
 SSA Consultants, LLC

Project:

**O'Neal Lane
 (South Harrell's Ferry Road
 to George O'Neal Road)**

Sheet Title:

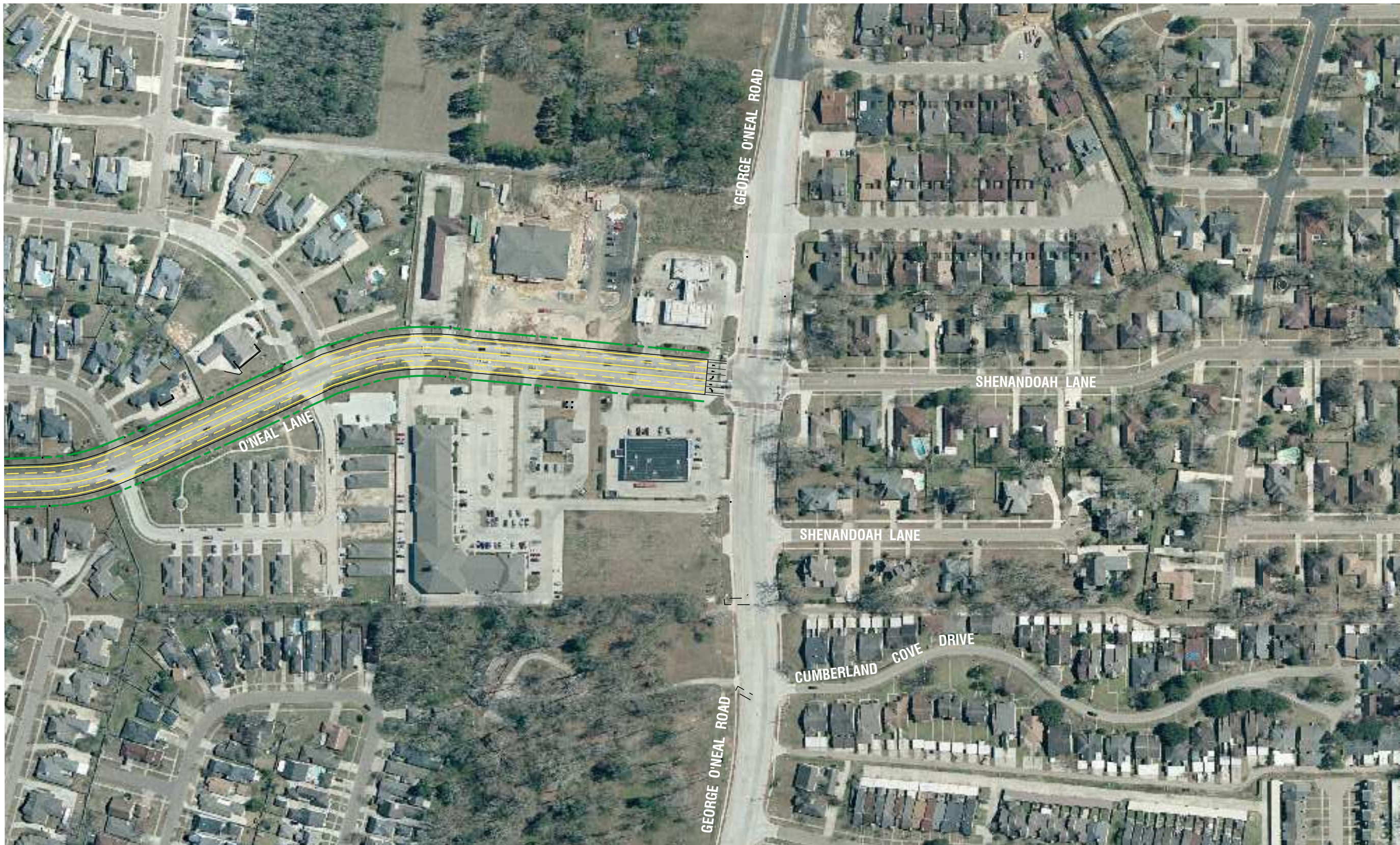
Exhibit B

Date:	July 20, 2010
Project Number:	25041.00
Drawn By:	MMG
Checked By:	BP
Sheet:	

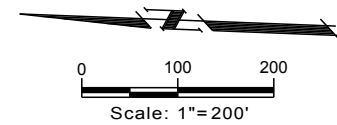
203

3 of 3

Sheet No:



1 O'Neal Lane (South Harrell's Ferry Road to George O'Neal Road)
 Scale: 1" = 200'



LEGEND

- EXISTING APPARENT R.O.W.
- PROPOSED R.O.W.
- TRAVEL LANES
- EDGE OF ROAD

\\G:\pp\king\p\Projects\203 - O'Neal Lane\Roadway Design\Concept Plan\203 Concept 1.dwg Jul 20, 2010 - 2:26pm